

Zip-Around Pouches: Accordion Pocket and Wrist Strap

Carol A. Brown

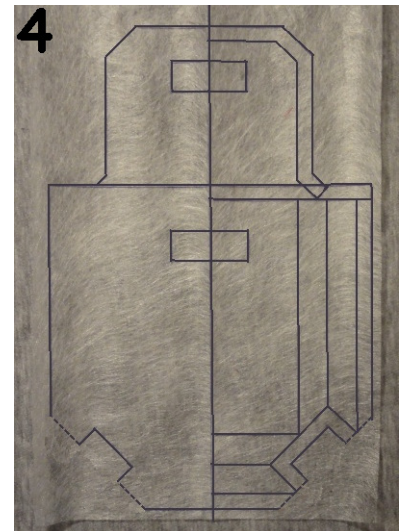
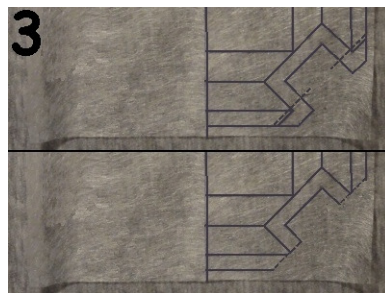
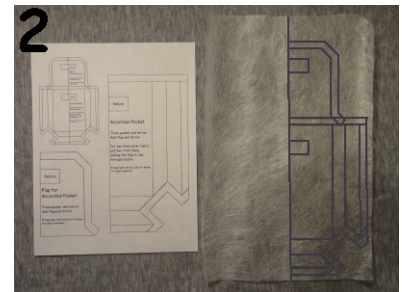
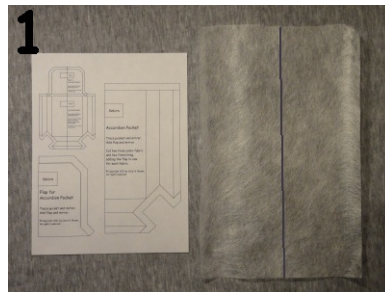
Electronic devices like Internet tablets and e-book readers need pouches to protect them. I have sized my Zip-Around Pouches to fit a variety of devices. Download the patterns from my blog and print the pieces for the size you want to make. The finished sizes of the pouches, as well as embroidery positioning information, are given on the diagrams.

The power cords and USB cables need a pocket to keep them handy. The accordion corners on the pocket I designed allow the pocket to lie flat when empty. You will need 18" x 13" of outer and lining fabrics and two 2" pieces of Snag Free Velcro®. The pattern for the pocket is provided with the pouches. Mark pocket location on back of pouch after fusing fleece to the wrong side (see instructions for Zip-Around Eyeglass Cases).

A wrist strap will make it easy to carry your e-device wherever you go. Instructions for making the wrist strap and a loop for attaching a swivel clip to the pouch follow the accordion pocket. See step 1 for materials needed.

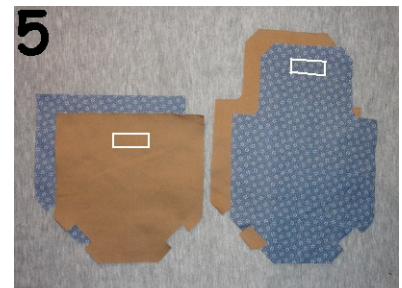
Prepare the Pocket Pattern:

1. Print the Accordion Pocket Pattern provided on the last page of the Zip-Around Pouch for E-Devices document. (Fig. 1)
2. Cut a piece of pattern tracing material 9" wide by 13" high. Draw a line down the center of the material. (Fig. 1)
3. Pin the pocket pattern under the right side of the pattern tracing material so that the bottom of the pattern is very near the bottom of the material. Trace the pattern. Trace the location for Velcro® (Fig. 2)
4. Pin the flap pattern under the pattern tracing material so that the bottom rests on the seam line of the pocket's top edge. Trace the location for Velcro®. (Fig. 2)
5. For the bottom corner, you can choose to cut on the solid lines or on the broken line. The latter will reduce bulk in the finished pocket. (Fig. 3)
6. Remove the paper pattern. Fold the pattern tracing material on the vertical line and trace the second side. You need only the outline, the cutting line for the pocket front, and the Velcro® locations. (Fig. 4)
7. Cut out the pattern.



Make the Pocket:

1. Cut the pattern from outer fabric twice, once with the flap portion folded down. (The front of the pocket has no flap.) Mark the Velcro® location on the right side of the pocket front. Be sure the marks will be removable. Cut the pattern from lining fabric twice, once with the flap portion folded down. (The front of the pocket has no flap.) Mark the Velcro® location on the right side of the flap. Be sure the marks will be removable. (Fig. 5)
2. Turn the outer pocket pieces wrong side up. Mark lines parallel to each side and bottom edge, 3 3/4" from those edges. Fold each raw edge to meet its parallel line. Pin, and press a crease. (Fig. 6)



3. Right side up, place a ruler 3/8" from the raw edge. (Fig. 7)

4. Bring the pressed fold up to meet the ruler and pin through all layers. Turn the pocket piece wrong side up. Press the second crease. Right sides will be together for this crease. (Fig. 8)

5. Repeat for all other sides of the pocket front and back. (Fig. 9)

6. Turn the pocket lining pieces wrong side up. Mark lines parallel to each side and bottom edge, 2 1/4" from those edges. Fold each raw edge to meet its parallel line. Pin, and press a crease. (Fig. 10)

7. Overcast raw edges with narrow zigzag stitch. Use same stitch to sew 2" long pieces of 3/4" wide Snag-Free Velcro® to right side of outer pocket front and inner pocket flap. (Fig. 11)

8. Right sides together, fold each corner so that raw edges meet. Pin the short diagonal seams only. (Fig. 12-A)

9. Reduce stitch length to 1.5 mm. Stitch 3/8" wide seam: begin at raw edge, pivot at the crease, take one stitch across the crease, then pivot again to continue stitching off the fold. Backstitch onto the fabric for a few stitches. (Fig. 12-B)

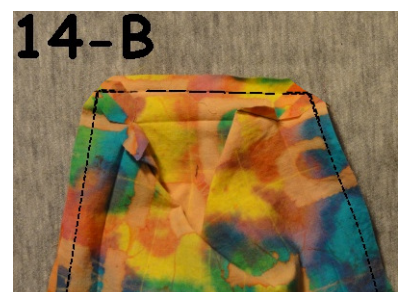
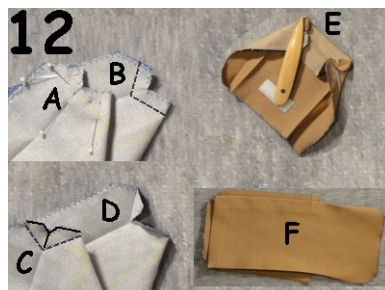
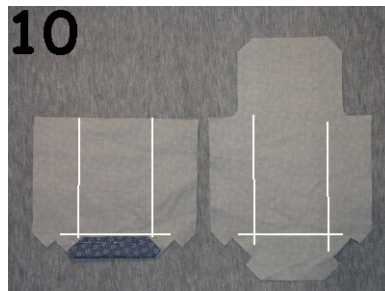
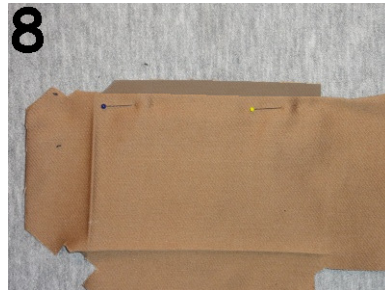
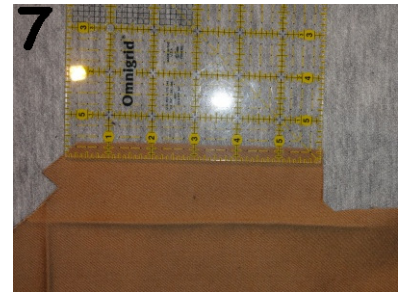
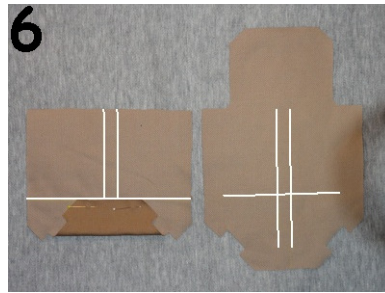
10. Clip the inner corner almost to the stitching. Trim the corners to remove bulk (the cut edge will go straight across from seam beginning to end). (Fig. 12-C)

11. Press the seam portions open using point presser. (Fig. 12-D)

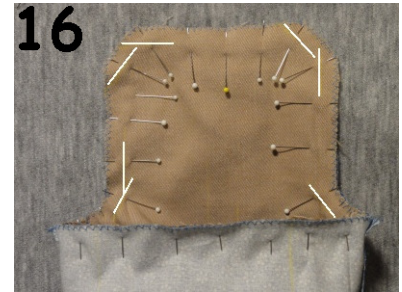
12. Use point turner to turn corner right side out. (Fig. 12-E)

13. Sharpen corners with point turner. Press flat. (Fig. 12-F)

14. Place outer pocket pieces right sides together. Pin one diagonal corner and bottom edge. Stitch 3/8" seam (normal stitch length). Pin lining pocket pieces together. Pin one diagonal corner and bottom edge. Stitch 3/8" seam, beginning at the diagonal. Just after pivoting to sew the bottom, backstitch to lock stitches. Baste seam until almost to where next diagonal seam will go. Backstitch and continue normal seam to the end of the pocket bottom. Clip top and bobbin threads at start and end of basted section. Press seams open. Arrows on Figure 13 show the beginning and end of the basted section. If you did not trim the pattern, you will sew across bottom for outer pocket and sew-baste-sew for the lining.

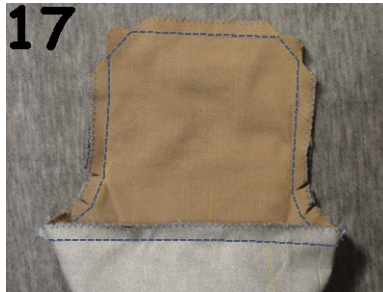


15. Pin side seams and remaining diagonal corners. Stitch 3/8" seams. Pivot when the seam changes direction and stitch a little onto the seam that is already there to lock stitches. Trim away corners as shown in Figure 14-A. Press seams open.



16. If you did not trim corners of pattern, there will be no diagonal seams. Figure 14-B shows how the seams will look after trimming corners diagonally.

17. Turn outer pocket right sides out. Press to reinforce creases. (Fig. 15)



18. Tuck the right side out outer pocket into the wrong side out lining. Match side seams. Pin together so that you can sew with the outer pocket fabric facing up. Marking where the next seam changes direction will make pivoting more accurate. (Fig. 16)

19. Stitch seam. Clip inner corners and trim outer corners. (Fig. 17)

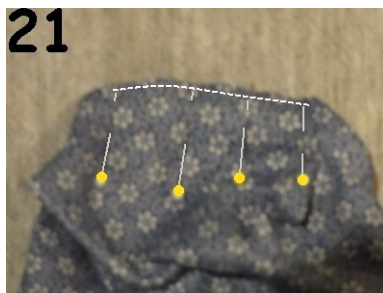
20. Press seam allowances toward lining. (Fig. 18)



21. Remove basting from lining bottom seam. Carefully turn pouch right side out through the opening. (Fig. 19)

22. Press seams flat, sharpening corners with point turner as needed. Top stitch seam at top of pocket and around flap. (Fig. 20)

23. Turn pocket lining side out. Pin folds of pocket lining opening together. Edge stitch on machine or slipstitch by hand. (Fig. 21)



24. Turn pocket right side out. Poke lining corners into outer pocket corners. Pin the front crease, tucking the lining into the crease. Top stitch the folds, keeping the lower layers of the pocket out of the way. (Fig. 22)

25. Tuck lining into the middle crease (seam line). Top stitch as above. Start and end just below the top edge of the pocket. (Fig. 23)
26. Tuck lining into back creases. Position pocket on marked line on back of pouch. Pin in place. Top stitch, keeping upper layers of the pocket out of the way. (Fig. 24)



Make the Loop and Wrist Strap:

1. Cut a piece of the outer fabric 2 3/4" wide by 14" long for the strap. Cut a piece of outer fabric 2 3/4" wide by 4" long for the loop. For greatest strength, the longer edge should be parallel to the selvage. You will need a 1" D-ring and a 1" swivel clip. (Fig. 25)
2. Fold the fabric right sides together parallel to the longer edge. Pin and stitch a scant 3/8" seam along the longer edge only. Press the seam open. Refold the longer tube so that the seam is centered on one side. Pin and stitch a seam across one short end. Trim corners diagonally. (See closeup.) (Fig. 26)
3. Turn tubes right side out. Sharpen corners of longer tube. Press tubes flat. Top stitch folds of short tube and folds and finished end of long tube. (Fig. 27)
4. Mark on the wrong side of the long tube (the side with the seam) 1 1/2" and 2" from the finished end. Fold the finished end to meet the 2" line. Press a crease. (See arrow.) (Fig. 27)
5. Fold the raw end up to meet the line that is 1 1/2" from the finished end. Place a D-ring on the finished end and fold to overlap the raw end. Pin through all layers. Stitch a rectangle to secure. Fold the short tube around the end of the swivel clip. The seam will be hidden inside the loop. Pin through all layers. Stitch a rectangle to secure. (Fig. 28)
6. Place the swivel clip loop on the right side of the pouch front. The raw edges of the loop should be at the edge of the pouch, and the loop should be 1" below the angled top edge. Pin in place. Stitch 1/8" from raw edge to secure. (Fig. 29)
7. Construct pouch as instructed. Attach wrist strap. (Fig. 30)

